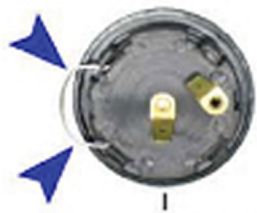


### TOOLS NEEDED:

Wire Cutters	Standard Socket Set w/Ratchet Wrench
Steering Wheel Puller	

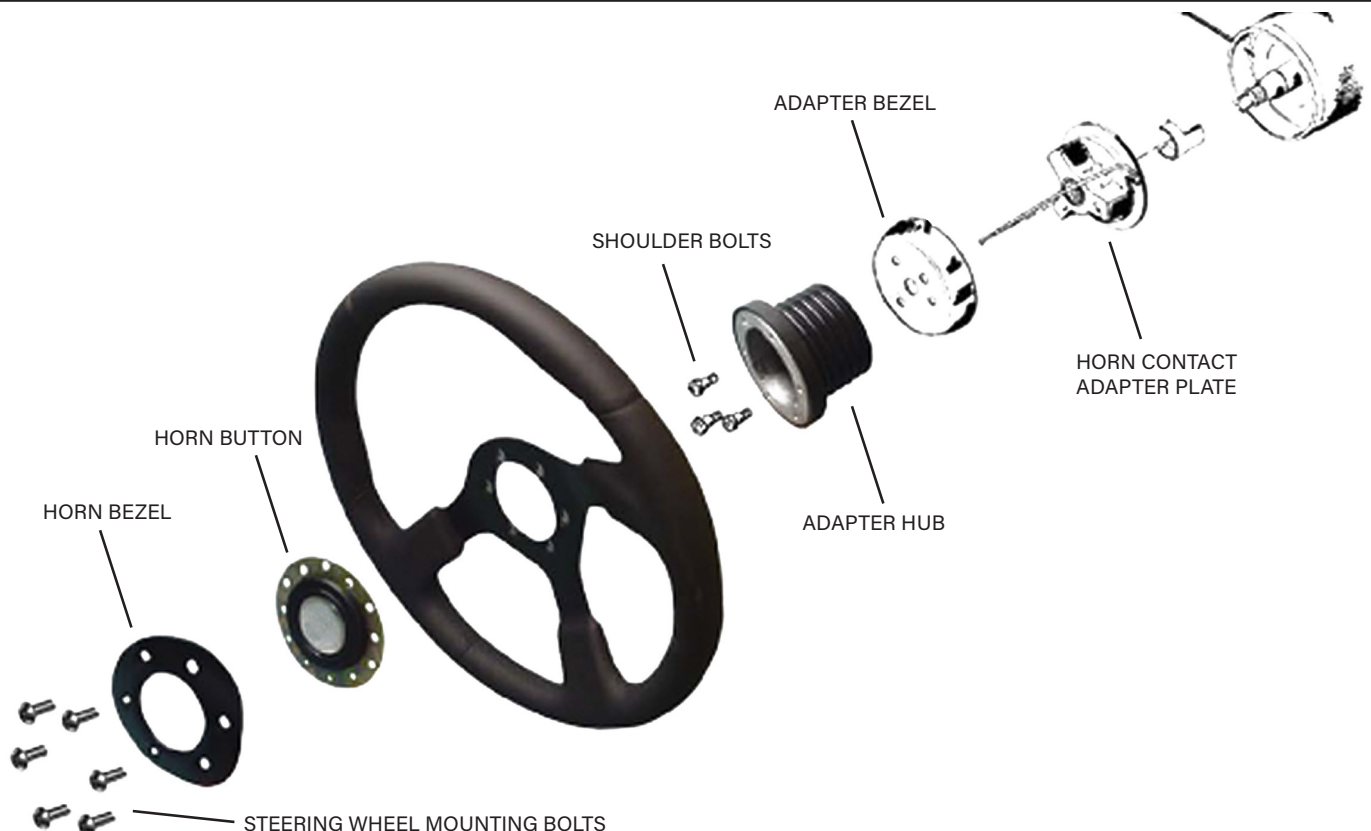
### PARTS INCLUDED:

Steering Wheel	Splined Horn Contact Adapter Plate
Adapter Bezel	Adapter Hub
Horn Button	Horn Bezel
Steering Wheel Mounting Bolts	3 - Shoulder Bolts



### FOR 66-73 FORD BRONCOS, YOU MUST PERFORM THE FOLLOWING HORN BUTTON CUSTOMIZATION

Cut off the external portion of the horn button spring. This wire must not make contact with the steering wheel. To do this, pull the spring out slightly and cut at the point where it goes back into the button housing with wire cutters. Then push the remaining spring portion back in slightly so that it seats fully within the horn button housing.



### SEE IMPORTANT NOTE ON HORN BUTTON SPRING & ADAPTER INSTALL IMAGES ON ADDITIONAL PAGES PRIOR TO INSTALLATION ON 66-73 FORD BRONCOS.



1. Point the wheels straight ahead and disconnect the battery before starting removal of the old steering wheel so that the horn will not short out & blow during installation.
2. Remove the factory horn button by pressing down on the center of the horn button and turning it counterclockwise.
3. Remove the nut holding the steering wheel to the shaft.
4. Mark the shaft to indicate the top center alignment of the steering wheel.
5. Using a steering wheel puller, use the two tapped holes in the hub of the original wheel to pull the steering wheel off the steering shaft.
6. If your original wheel has a turn indicator cam, remove this part and modify it as shown in Illustration #1. Reinstall the cam in the same position as it was on the original wheel onto the new steering wheel horn contact plate in the 9 o'clock position.
7. Position the horn contact plate on the splined shaft with the "TOP" indicator aligned with the mark you made on the steering shaft in step #4.
8. Position the adapter bezel and hub adapter in alignment with the three holes on the horn contact adapter plate. Secure using the three shoulder bolts provided (do not tighten yet). Install the factory steering shaft nut (do not tighten yet).
9. Install the steering wheel with two of the provided steering wheel mounting bolts and check wheel position alignment. If correct, tighten the steering shaft nut securely and then tighten the three shoulder bolts securely.
10. Remove the two steering wheel bolts. Then install the horn button by attaching the horn contact wires on the hub of the back of the horn button. Install the horn bezel using the six steering wheel mounting bolts provided. **NOTE: For 1974-77 Ford Broncos, the single horn contact wire goes on the center post on the back of the horn button. No horn button modification necessary for a factory 74-77 Bronco steering column.**
11. Reconnect the battery and enjoy your new steering wheel.

**NOTE: For 66-73 Bronco columns, if there is a gap between the adapter bezel and column, an easy adjustment can be made. Loosen the bolts under the dash that hold the column in position. Move the column housing up or down as needed, leaving about a 1/8" gap and then retighten the bolts.**

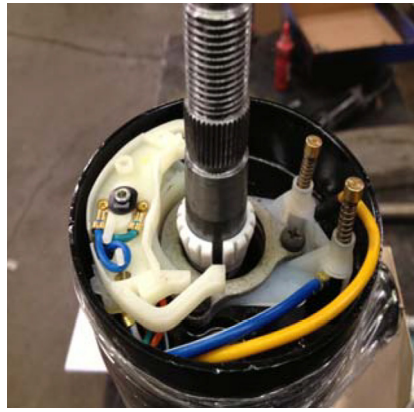
**TORQUE REQUIREMENTS: Shoulder Bolts (10-12 ft/lbs), Steering Shaft Nut (45-55 ft/lbs.)**

## CUSTOM STEERING WHEEL INSTALLATION

TOMS OFFROAD, INC



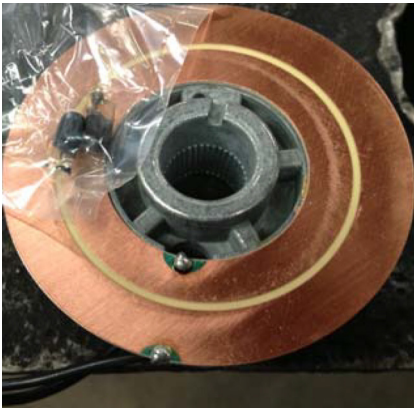
1. Bare steering column without adapter installed.



2. Install bearing sleeve.



3. Install upper column shaft spring.



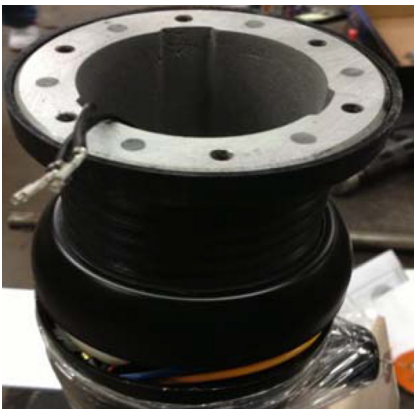
4. Lube horn contact adapter plate prior to installation.



5. Install horn contact adapter plate.



6. Install adapter bezel.



7. Install adapter hub.



8. Install 3 shoulder bolts and column shaft nut.



9. Align & install steering wheel to adapter.