



TOMSOFFROAD.COM

541.779.1339

#C6498 Coyote Motor Mounts Installation Instructions

TOOLS NEEDED:

Standard & Metric Wrench Sets

3/8 Ratchet & Socket Set

PARTS INCLUDED:

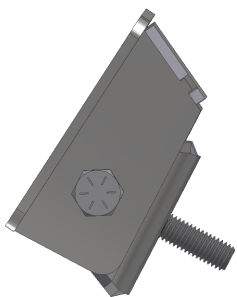
2 - HD Motor Mounts for Coyote 5.0L

6 - 10mm 8.8 x 1.5 Bolts & Lock Washers

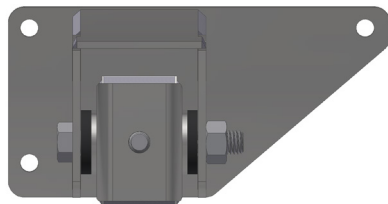
2 - 1/2" NC Nuts & Lock Washers

INSTALLATION:

1. Using the six 10 mm bolts & lock washers provided, mount motor mounts to Coyote engine block in factory motor mount positions. Torque to 41 ft lb. Refer to included schematics for proper orientation.
2. With motor mounts secured, loosen pivot bolt slightly so the center pivot moves with minimal force.
3. Place Coyote engine in engine bay with motor mount studs inserting into factory V8 motor towers.
4. Make sure motor is level side to side and is equal distance down driver and passenger motor tower. With motor level, use provided 1/2" nuts and lock washers to secure motor mounts to frame. Torque to 57 ft lb.
5. Torque pivot bushings on motor mounts to 100 ft lb.
6. Once motor is fully installed, check for proper clearance in engine bay. Take into consideration potential movement under load.



Driver (LH) Mount



Passenger (RH) Mount

