

# ROUGH COUNTRY

## FORD 2021- Up Bronco Speed Calibrator

Thank you for choosing Rough Country for all your vehicle needs.

Please read instructions before beginning installation. Check the kit hardware against the kit contents shown below. Be sure you have all needed parts and know where they go.

If question exist, please call us @1-800-222-7023. We will be happy to answer any questions concerning this product.

Check all fasteners for proper torque. Check to ensure for adequate clearance between all components.

Periodically check all hardware for tightness.

### Kit Contents:

Speed Calibrator x1

### Tools Needed:

7mm Socket  
10mm Socket  
T20 Torx Bit  
T 30 Torx Bit  
Plastic Pry Tool



### Torque Specs:

Size	Grade 5	Grade 8	Size	Class 8.8	Class 10.9
5/16"	15 ft/lbs	20ft/lbs	6MM	5ft/lbs	9ft/lbs
3/8"	30 ft/lbs	35ft/lbs	8MM	18ft/lbs	23ft/lbs
7/16"	45 ft/lbs	60ft/lbs	10MM	32ft/lbs	45ft/lbs
1/2"	65 ft/lbs	90ft/lbs	12MM	55ft/lbs	75ft/lbs
9/16"	95 ft/lbs	130ft/lbs	14MM	85ft/lbs	120ft/lbs
5/8"	135ft/lbs	175ft/lbs	16MM	130ft/lbs	165ft/lbs
3/4"	185ft/lbs	280ft/lbs	18MM	170ft/lbs	240ft/lbs

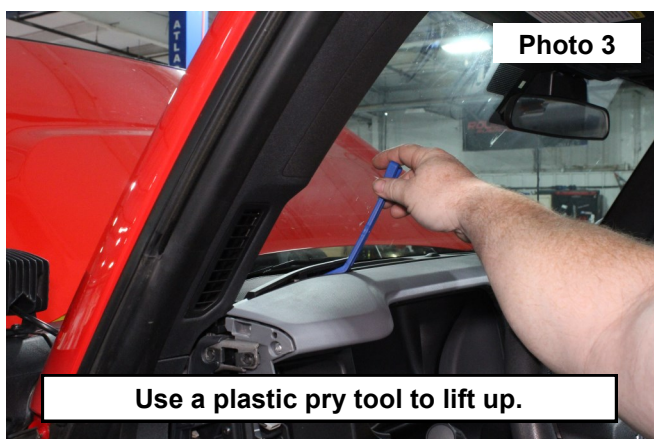


## INSTALLATION INSTRUCTIONS

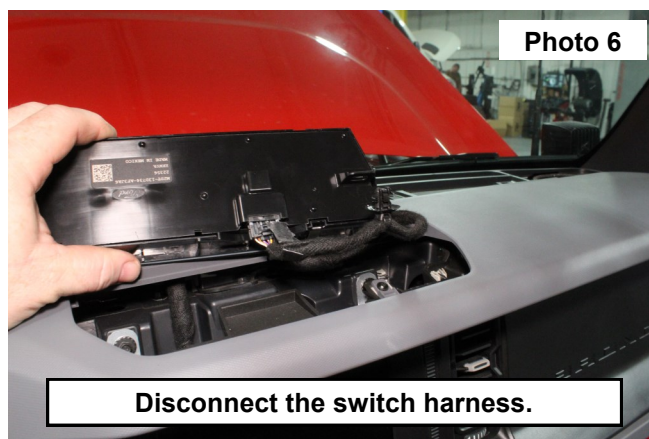
1. Disconnect the ground on the battery using a 10mm socket.
2. Remove the (4) bolts from the Driver and Passengers side dash handles using T30 Torx bit. **See Photo 1.**
3. Retain the hardware and remove the handles. **See Photo 2.**



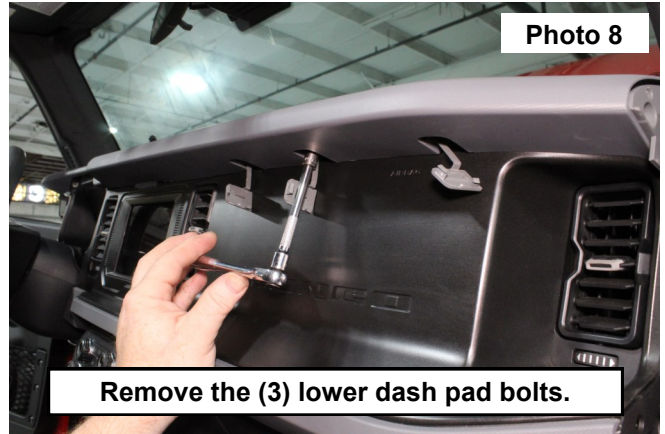
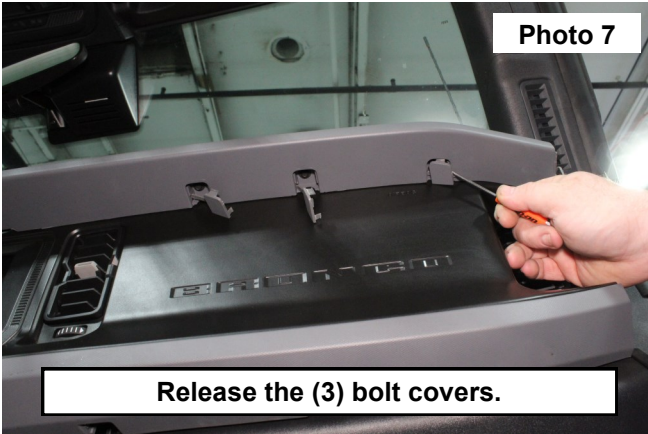
4. Lift the driver and passenger side speaker covers from the dash using a plastic pry tool. **See Photos 3 and 4.**



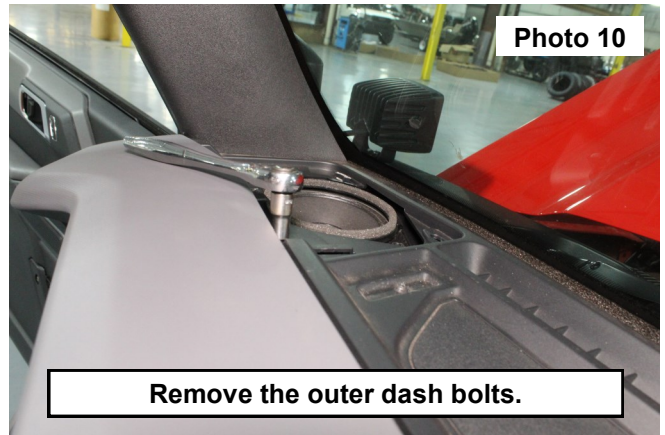
5. Lift the center switch panel from the dash using a plastic pry tool. **See Photo 5.**
6. Disconnect the wiring harness and set the switch panel aside in a safe location. **See Photo 6.**



- Unclip the (3) bolt covers from the bottom side of the dash pad. **See Photo 7.**
- Remove the (3) bolts using a 7mm socket. **See Photo 8.**



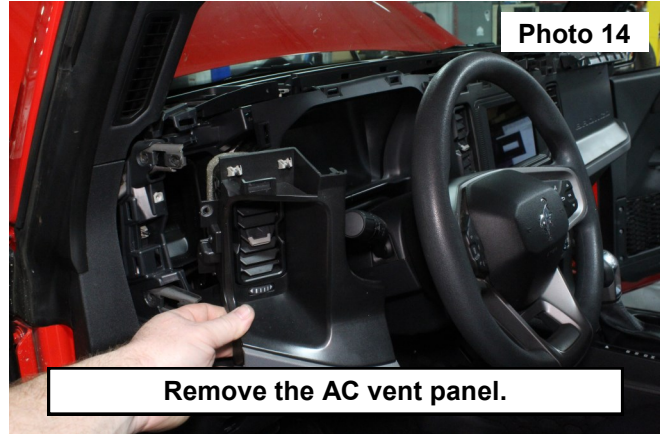
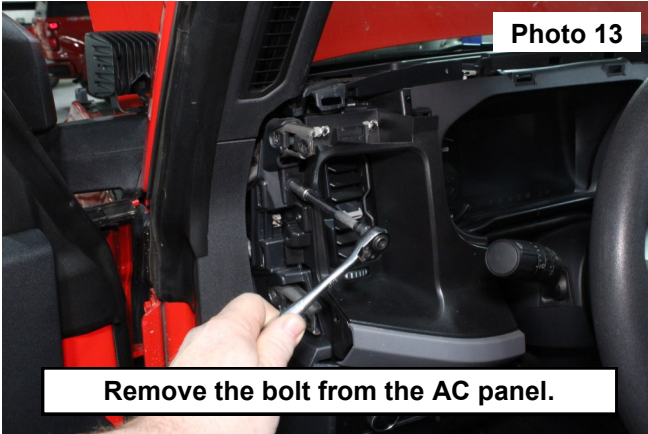
- Remove the (2) center bolts from the dash pad using a T20 Torx Bit. Retain hardware. **See Photo 9.**
- Remove the driver and Passengers side bolts from under the speaker grille cover using a 7mm socket. **See Photos 10 and 11.**



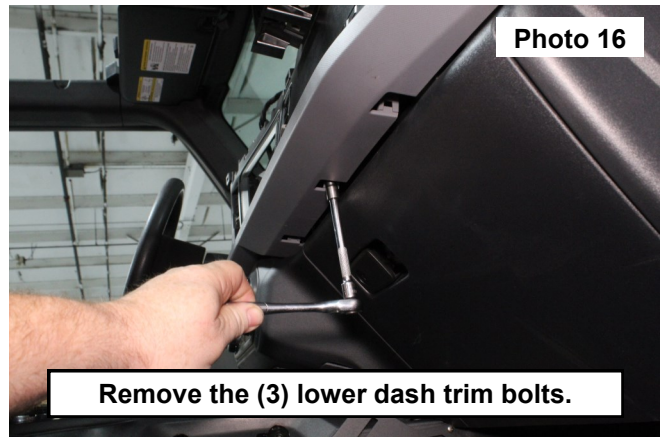
- Safely remove the dash pad from the vehicle and set aside. **See Photo 12.**



12. Remove the (1) bolt in the driver side of the dash bezel. Then remove the bezel placing it in a safe place. **See Photos 13 and 14.**



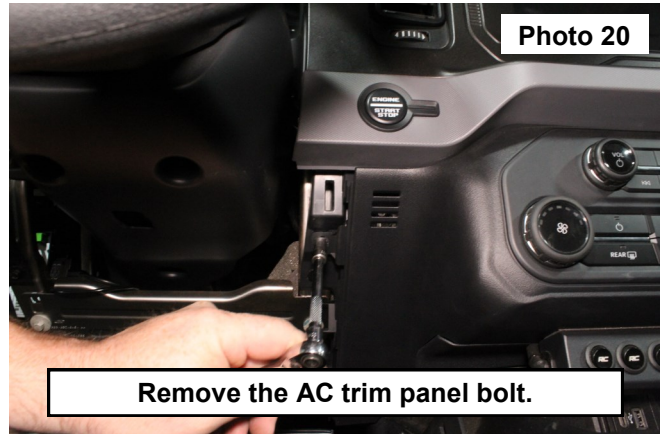
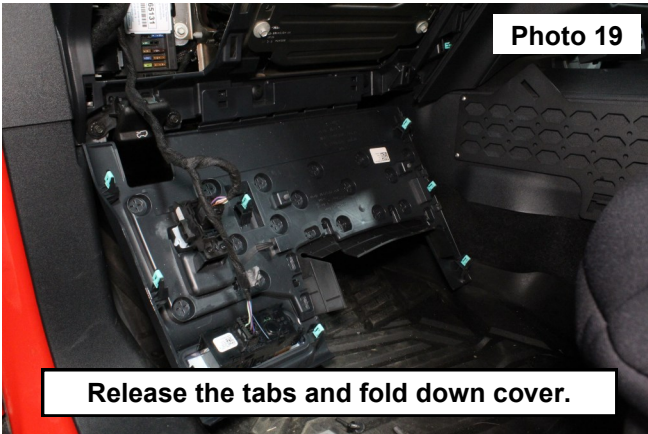
13. Remove the (1) bolt in the passenger side of the dash bezel and the (3) bolts in the bottom of the lower dash trim panel using a 7mm socket. **See Photos 15 and 16.**



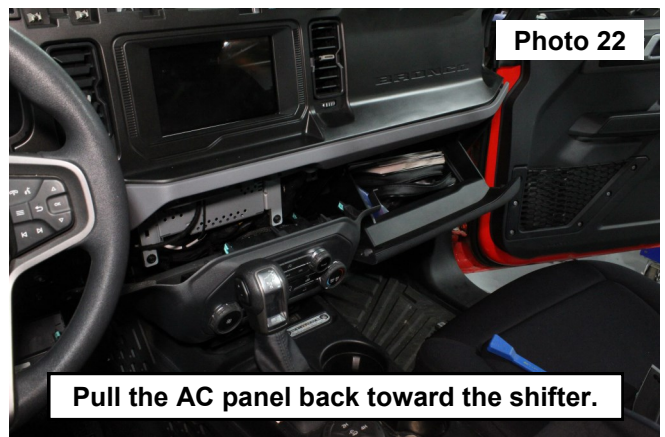
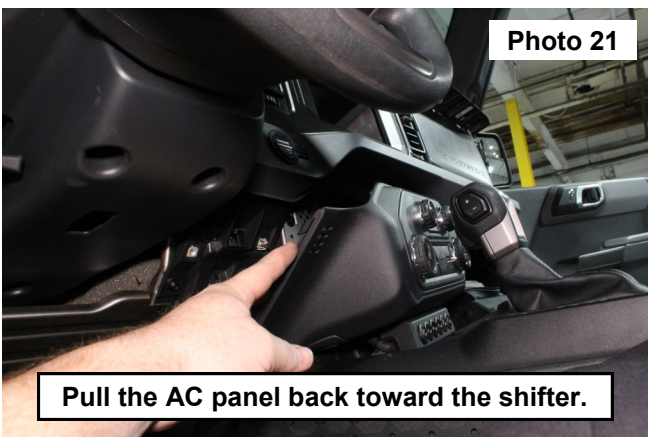
14. Remove the (2) bolts in the passenger's side dash trim panel using a 7mm socket. **See Photo 17.**  
15. Open the glove box, locate the bolt that secures the AC trim panel to the dash. Remove using a 7mm socket. **See Photo 18.**



16. Under the steering column, pull the panel to release the tabs. Then fold down to access the bolt that secures the AC trim panel to the dash on the driver side. Remove using a 7mm socket. **See Photos 19 and 20.**

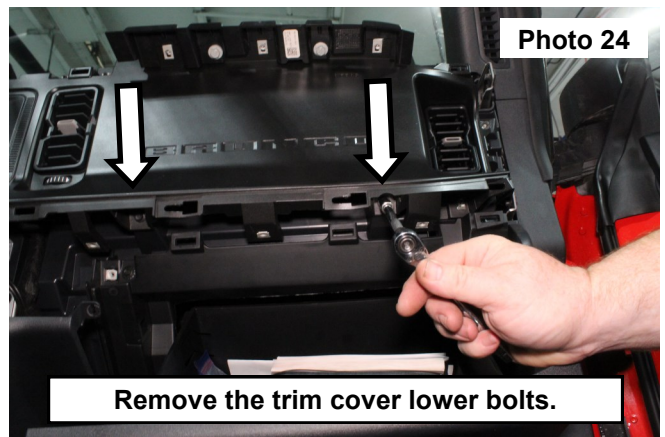
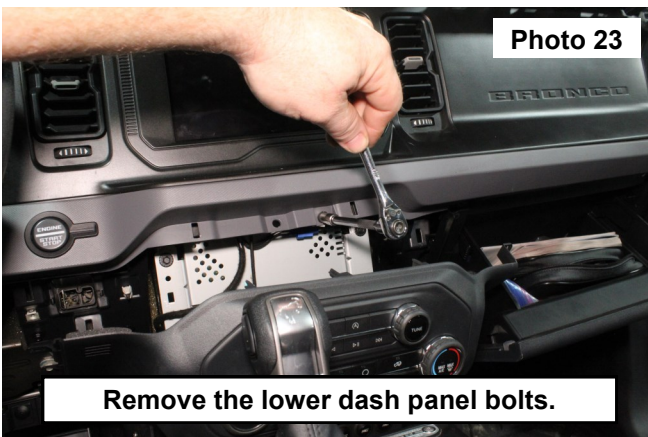


17. Pull the AC panel back toward the shifter. **See Photos 21 and 22.**



18. Remove the (1) bolt in the lower dash trim panel using a 7mm socket. Remove the dash Panel. Set aside in a safe place. **See Photo 23.**

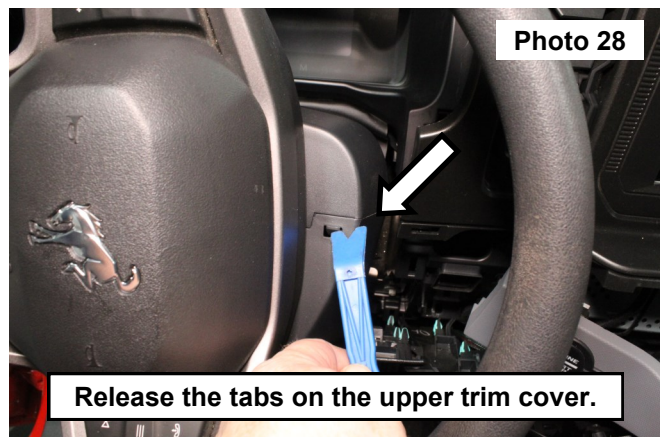
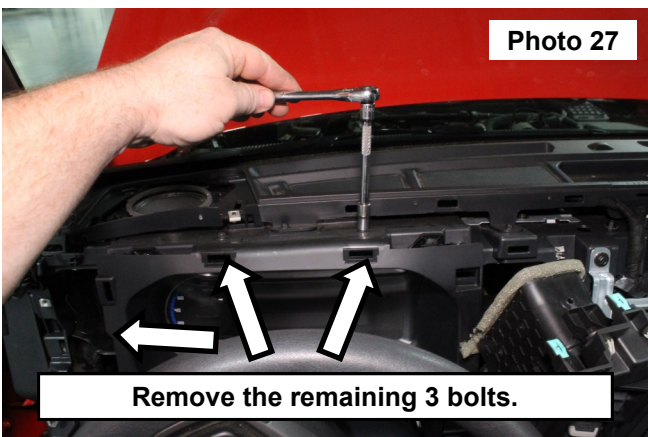
19. Remove the (2) remaining bolts in the AC vent panel using a 7mm socket. **See Photo 24.**



20. Pull the AC vent panel back and remove the (4) bolts in the gauge trip panel using a 7mm socket. See Photos 25 , 26 and 27.

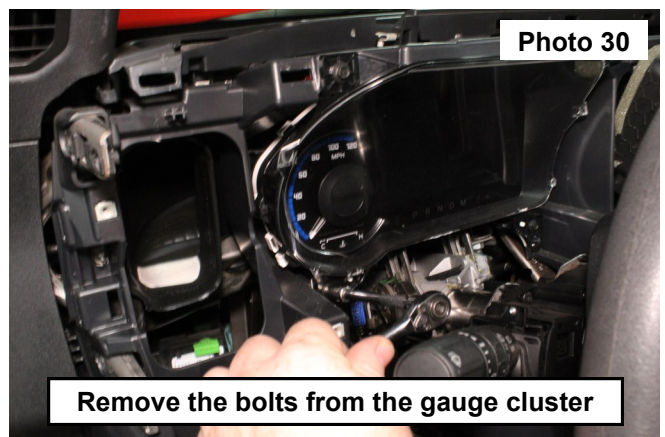


21. Using a plastic pry tool release the clips from each side of the steering column upper trim cover. See Photo 28.

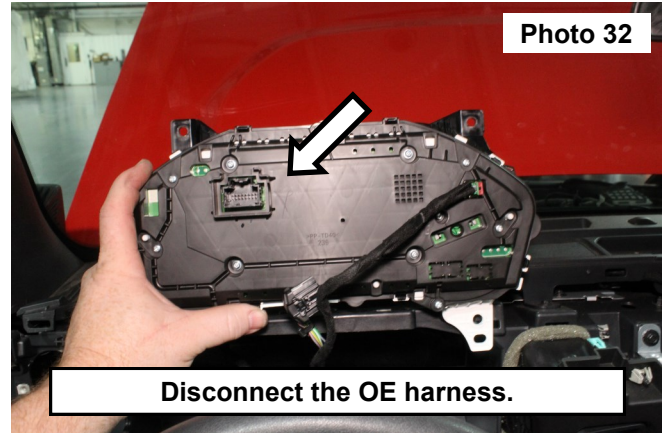
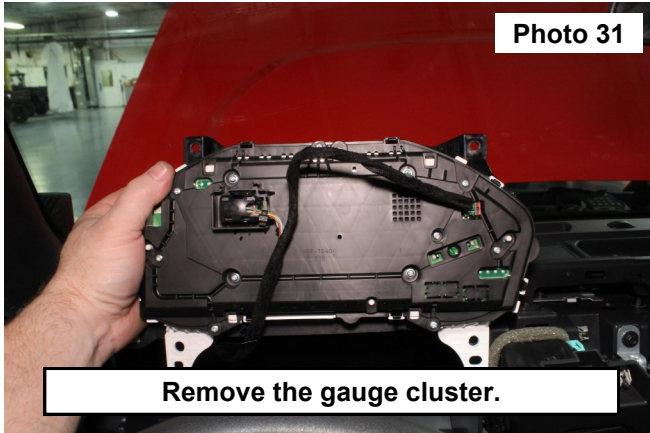


22. Lift out the gauge trim and steering column cover. Set aside in a safe place. See Photo 29.

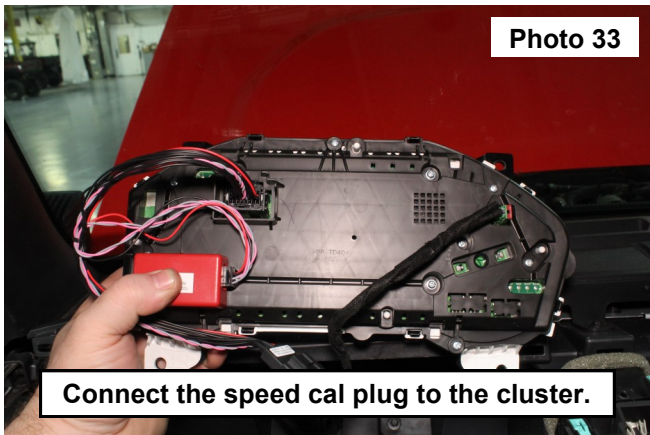
23. Remove the (4) bolts in the gauge cluster using a 7mm socket. Retain hardware. See Photo 30.



24. Remove the gauge cluster from the dash. **See Photo 31.**
25. Facing the back of the gauge cluster. Disconnect the larger plug on the upper left side of the gauge cluster. **See Photo 32.**



26. Connect the Speed Calibrator harness plug into the gauge cluster. **See Photo 33.**
27. Connect the vehicle plug into the Speed Calibrator harness. **See Photo 34.**



28. Install the gauge cluster into the dash using the (4) OE bolts, securing the speed calibrator in a safe location. Tighten using a 7mm socket. **See Photo 35.**
29. **NOTE:** The speed calibrator can be wrapped in padding incase of vibration to prevent noise.
30. At this time reverse steps 1-22 for installation of the dash panel. **See Photo 36.**



By purchasing any item sold by Rough Country, LLC, the buyer expressly warrants that he/she is in compliance with all applicable, State, and Local laws and regulations regarding the purchase, ownership, and use of the item. It shall be the buyers responsibility to comply with all Federal, State and Local laws governing the sales of any items listed, illustrated or sold. The buyer expressly agrees to indemnify and hold harmless Rough Country, LLC for all claims resulting directly or indirectly from the purchase, ownership, or use of the items.

